

Novelties Presentation Pirata Novelties (Stuttgart Fair)

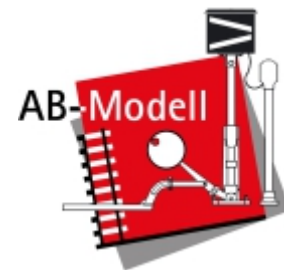
The Italian small-series manufacturer Pirata showed at the Stuttgart Autumn Trade Fair new Lasercut models of Graubündner houses, as well as the current state of production of the Bernina railcar announced a few years ago.

We have summarised the information for you in this newsletter.

We hope you enjoy reading it.

Yours

AB-Modell-team



Anja Bange Modellbau

Im Stuckenbahn 6

D-58769 Nachrodt

Fax: +49(0)2352/3348-62

info@n-schmalspur.de

www.n-schmalspur.de



Only two snapshots with the mobile phone, but still very informative: current project status of the ABe4/4 51 of the Bernina Railway.

We were able to find out the following facts:

- 3D-printed body
- scale 1:150
- N-gauge chassis (for 9mm tracks)
- currently neither orderable nor reservable
- The availability of the chassis has yet to be clarified.
- At present, neither delivery possibilities nor production periods are known. The model is still in the project phase.

RhB ABe4/4 51

We were able to talk in detail with Andrea Barella about the current project at the trade fair. The exhibited study is a preliminary project and is by no means binding. At the moment investigations are underway as to which N chassis could be used under the railcars. Here it is above all the sufficient availability and good driving characteristics that are important for him to be able to deliver a mature model.

Mr. Barella was not able to tell us within what time span this vehicle could be realized.

Orders

The railcar is not yet beyond the project stage, so we do not accept any orders or reservations for the model at the moment. We are also not able to make any statements about possible conversions to narrow gauge of the undercarriage, driving characteristics, costs, etc..

As usual, we will keep interested parties up to date on all new developments via our newsletter.

If you have not yet done so, please register for our newsletter. Thank you very much.



A view through the display case shows among other things the station building of Miralago (left in the picture), as well as the castle ruin of Sils. The romanesque bridge in the right foreground is a H0-model and not available for N.

Details of the available models can be found on the following pages of our novelties show.

Graubündner Houses

A whole series of new lasercut buildings modelled on houses in Graubünden were shown at the fair.

Next to the houses and stables, a church is in preparation to complement the village, but unfortunately we could not get hold of it at the fair.

Also new are the castle ruins of Sils, as well as small wayside shrines based on a Ticino model.

You could also see the reception building of the station Miralago at the Lago di Poschiavo, as well as a small bus shelter, as it could be found everywhere at a narrow-gauge railway.

The Lasercut models are ready assembled and colored. The impression of these small pieces of jewellery is quite excellent. Smaller details like rain gutters or downpipes have to be procured and installed by the model railroader himself. The windows are not backed with a clear foil. We enclose a foil for self-assembly.

Current prices are published on our website at www.n-schmalspur.de

In order to always be up to date please sign up for our newsletter. Thank you very much.

Novelties Presentation Pirata Novelties (Stuttgart Fair)

Graubündner House I



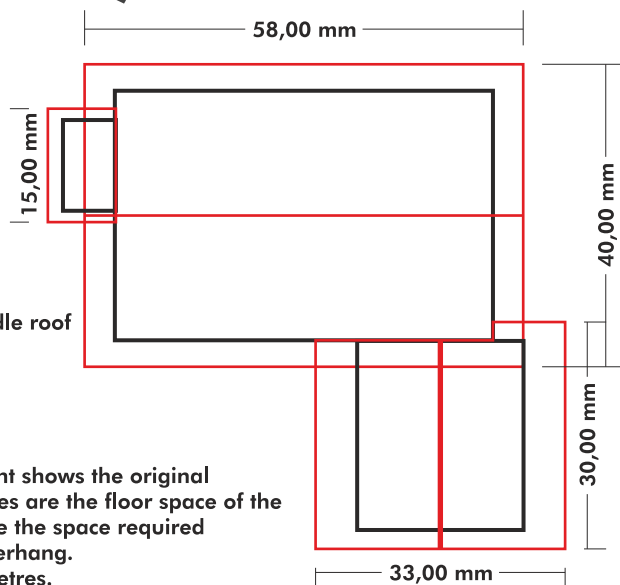
Graubündner House I

two-storey main building with ground level entrance and saddleback roof

shed annex with saddle roof at right angle

small attached shed with pent roof

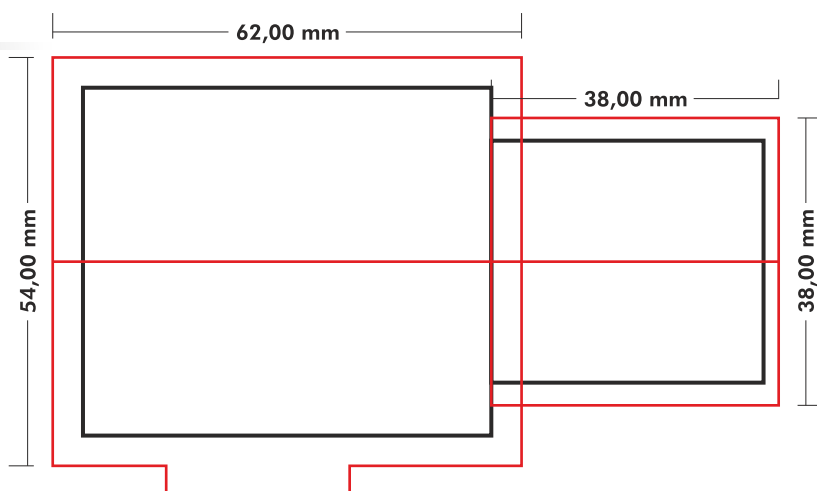
The sketch on the right shows the original dimensions. Black lines are the floor space of the building, red lines are the space required including the roof overhang. Dimensions in millimetres.



Graubündner House II



Graubündner House II
two-storey main building with two entrances at ground level and saddle roof, roofed balcony
stable extension with saddle roof



The sketch above shows the original dimensions. Black lines are the floor space of the building, red lines are the space required including the roof overhang. Dimensions in millimetres.

Graubündner House III

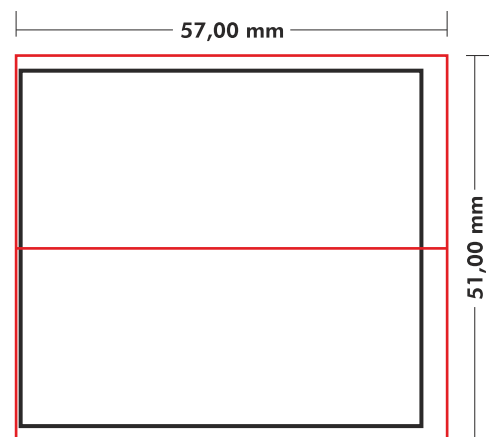


Graubündner House III

two-storey building with a ground-level and an entrance on the first level
saddle roof, slightly forward staggered

typical purpose as stable and/or equipment shed

Due to the different height of the two doors/gates the model is preferred to be mounted in hillsides. Alternatively, a ramp could also be installed to the upper entrance.



Current prices are published on our website at www.n-schmalspur.de
In order to always be up to date please sign up for our newsletter. Thank you very much.

Novelties Presentation Pirata Novelties (Stuttgart Fair)

Graubündner Stable II

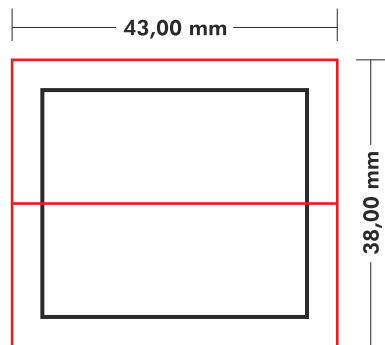


Graubündner Stable II

Single-storey barn with higher lying entrance and saddle roof

The ramp is not part of the model.

The sketch on the right shows the original dimensions. Black lines are the floor space of the building, red lines are the space required including the roof overhang. Dimensions in millimetres.

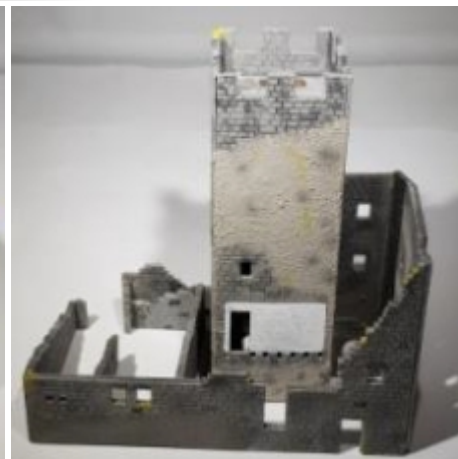
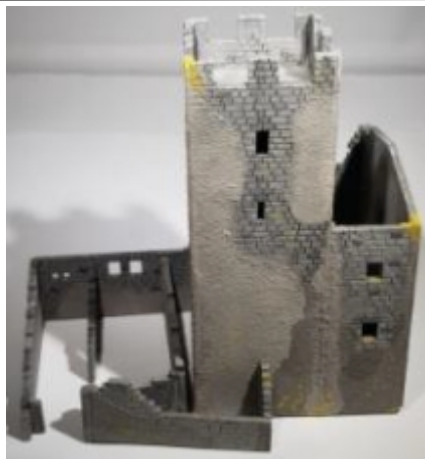


We were able to purchase the four models presented at the Stuttgart trade fair. Below now further models, which are specified on the price list, whose measures we do not know however up-to-date (pictures from the price list).

Graubündner Church



Castle Ruin of Sils



features	price/item-#
Graubündner House I Lasercut finished model	EUR 28,-- HRB-0205
Graubündner House II Lasercut finished model	EUR 36,-- HRB-0206
Graubündner House III Lasercut finished model	EUR 30,-- HRB-0209
Graubündner Stable II Lasercut finished model	EUR 16,-- HRB-0208
Graubündner Church Lasercut finished model	EUR 36,-- HRB-0210
Castle Ruin of Sils Lasercut finished model	EUR 62,-- HRB-0211
Ticino Wayside Shrine 1 Lasercut finished model	EUR 8,-- HRB-0240
Ticino Wayside Shrine 2 Lasercut finished model	EUR 8,-- HRB-0241
Ticino Wayside Shrine 3 Lasercut finished model	EUR 8,-- HRB-0242

Vorbestellpreis/early-order-price/prix précommande

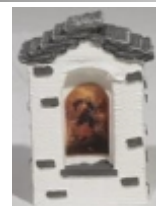
Vorbestellung bis
Reservation until
Réservation jusque **31.01.2020**

Vorbehaltlich Lieferbarkeit und Preisänderungen durch Pirata

Ticino Wayside Shrines



Variant 1



Variant 2



Variant 3

Deliveries

Please order the desired models from us by 31.01.2020 at the latest. We only order the order requests we have received until then from Pirata and do not keep any buildings in stock, as we do not have the necessary capacities.

We cannot judge whether it will be possible to reorder the same models at a later date.

The delivery takes place in the order of the order entrance after delivery by the company Pirata.

Subject to availability and price adjustments by Pirata.

Current prices are published on our website at www.n-schmalspur.de

In order to always be up to date please sign up for our newsletter. Thank you very much.